

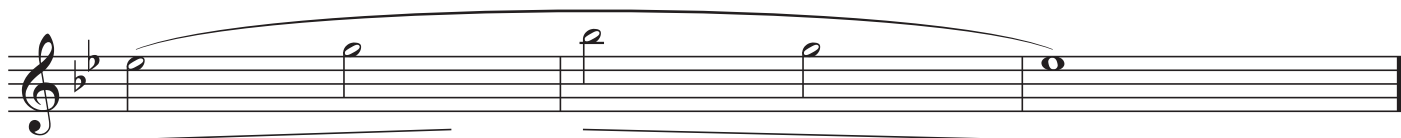
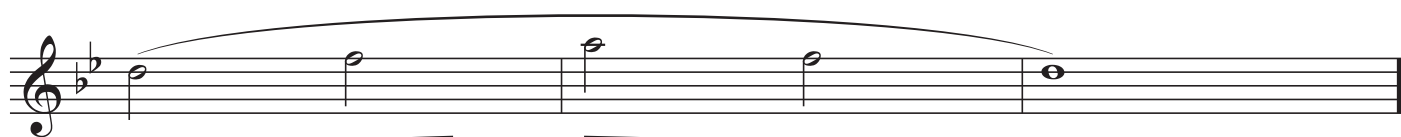
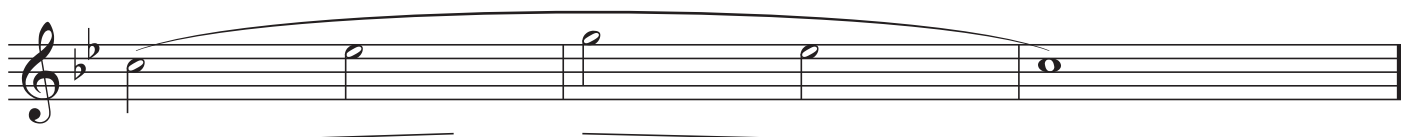
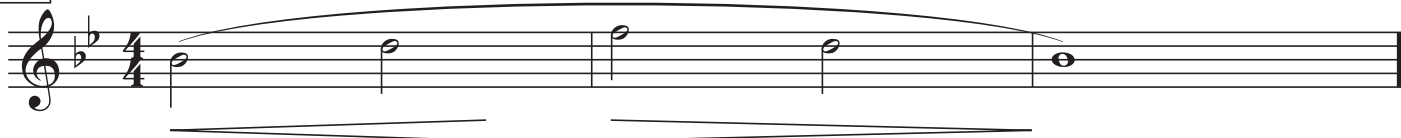
Übung 1 - Dynamikübungen



**Nordbayerischer
Musikbund e.V.**

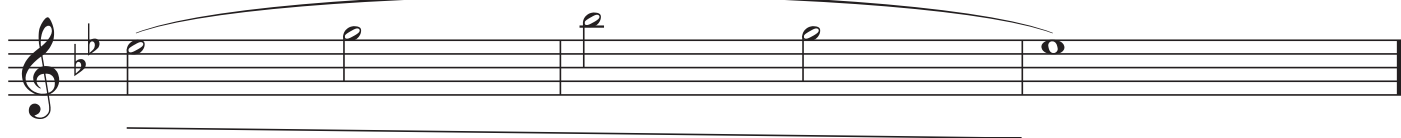
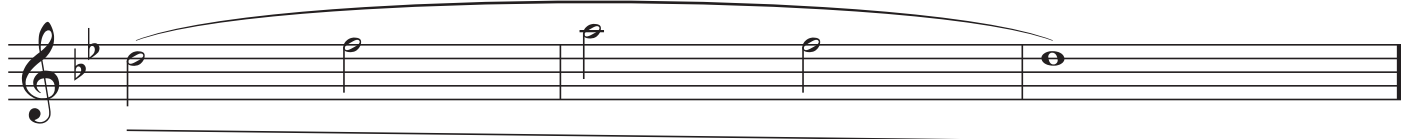
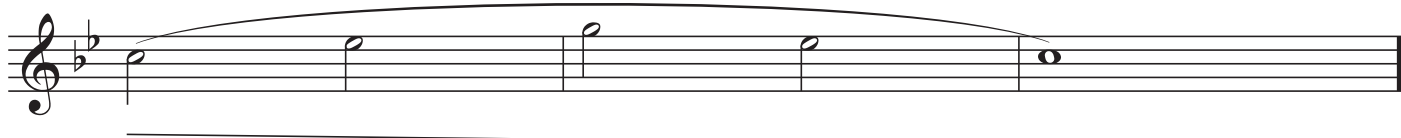
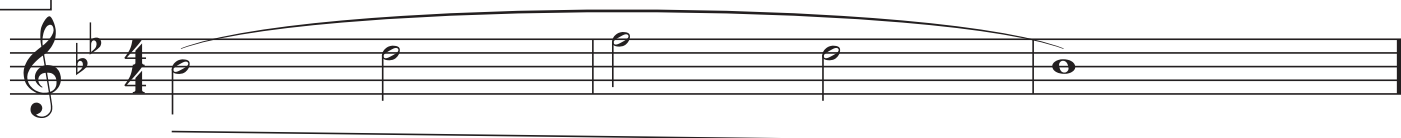
Lasse beim Lauterwerden den Hals offen und die Lippen locker.
Beim Leiserwerden führst du den Luftstrahl nach oben, somit wird der Ton höher.
Hierfür gehen Unterlippe und Unterkiefer leicht nach vorne.

A



B

Beim Leiserwerden führst du den Luftstrahl nach oben, somit wird der Ton höher.



Halte die jeweilige Dynamikstufe über die Tonsprünge.

C

ff
mf
p

ff
mf
p

D Spiele einen fließenden Dynamikwechsel.

ff
mf
p

ff
mf
p

ff
mf
p

Übung 2 - Tonübungen

A $\text{♩} = 80$ Spiele glatte Töne und mache ein deutliches Crescendo.

mp *f*

mp *f*

mp *f*

Two staves of music in 4/4 time, key of B-flat major. The first staff starts with a mezzo-piano (*mp*) dynamic and a crescendo leading to a fortissimo (*f*) dynamic. The second staff starts with a mezzo-piano (*mp*) dynamic and a crescendo leading to a fortissimo (*f*) dynamic. Both staves feature a melodic line with a slur over the first two notes and a fermata over the final note.

Werde zur zweiten Note hin lauter.
Führe den Ton nach unten und lasse ihn nicht fallen.

Four staves of music in 4/4 time, key of B-flat major. Each staff contains a pair of notes (quarter and eighth notes) with a slur and a fermata. The first two staves show a crescendo from *mp* to *f*. The last two staves show a decrescendo from *f* to *mp*.

Three staves of music in 4/4 time, key of B-flat major. Each staff contains a pair of notes (quarter and eighth notes) with a slur and a fermata. The first staff shows a crescendo from *mp* to *f*. The second and third staves show a decrescendo from *f* to *mp*.

Denke beim Sprung nach oben an schnellere Luft.

Four staves of music in 4/4 time, key of B-flat major. Each staff contains a pair of notes (quarter and eighth notes) with a slur and a fermata. The first two staves show a crescendo from *mp* to *f*. The last two staves show a decrescendo from *f* to *mp*.

Three staves of music in 4/4 time, key of B-flat major. Each staff contains a pair of notes (quarter and eighth notes) with a slur and a fermata. The first staff shows a crescendo from *mp* to *f*. The second and third staves show a decrescendo from *f* to *mp*.

Übung 3 - Atem- und Vibratoübungen

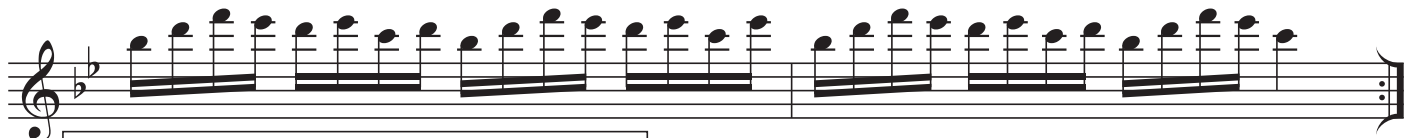
Spieler jeden Ton mit einem kurzen kräftigen "HA" - Impuls aus dem Zwerchfell an. Die Zunge wird nicht benutzt.

A single staff of music in 4/4 time, key of D major. It contains a series of quarter notes with accents, starting with a mezzo-forte (*mf*) dynamic and ending with a fortissimo (*f*) dynamic.

A single staff of music in 4/4 time, key of D major. It contains a series of quarter notes with accents, starting with a mezzo-forte (*mf*) dynamic and ending with a fortissimo (*f*) dynamic.

Kleinerer Impuls als bei A. Atme, als ob du hechelst.
Die Luft, die du ausatmest, atmest du direkt wieder ein.

A single staff of music in 4/4 time, key of B-flat major. It contains a series of eighth notes with accents, starting with a mezzo-forte (*mf*) dynamic and ending with a fortissimo (*f*) dynamic.



Spiele alles im Legato. Setze im Luftfluss zusätzliche Zwerchfellimpulse auf jede Note.

C

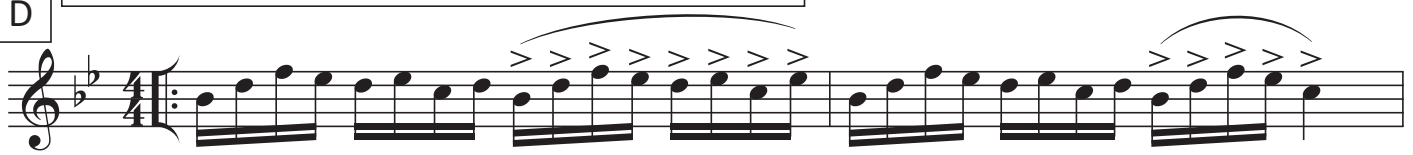


mf

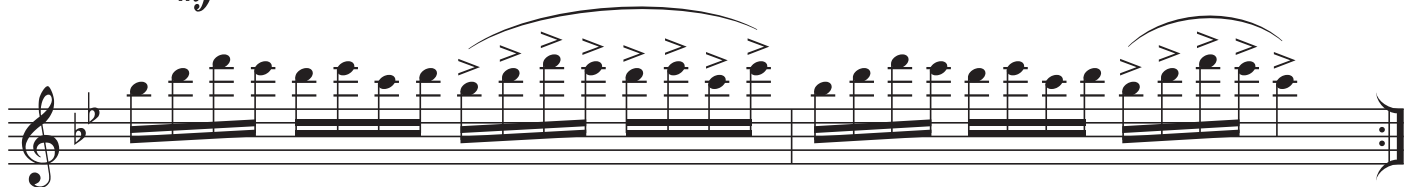


D

Wechsle zwischen beiden Varianten C und D hin und her.



mf



Übung 4 - Artikulationsübungen

Übe verschiedene Tonleitern in Terzsprüngen mit unterschiedlicher Artikulation.

C-DUR

STACCATO



ZWEIERBINDUNGEN



VIERERBINDUNGEN

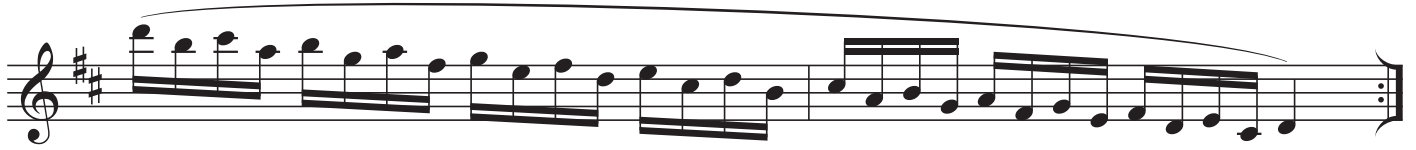
Two staves of musical notation for the exercise 'VIERERBINDUNGEN'. The first staff begins with a treble clef, a key signature of one sharp (F#), and a 4/4 time signature. The music consists of eighth-note patterns with slurs, starting on a middle C and ascending to a G. The second staff continues the pattern, ending with a double bar line and repeat dots.

LEGATO

Two staves of musical notation for the exercise 'LEGATO'. The notation is identical to the 'VIERERBINDUNGEN' exercise, but the notes are connected by a long slur across both staves, indicating a legato playing style.

D-DUR

Eight staves of musical notation for the exercise 'D-DUR'. The first staff starts with a treble clef, a key signature of two sharps (D major), and a 4/4 time signature. The music features eighth-note patterns with slurs, starting on a D4 and ascending to a G4. The subsequent staves continue the exercise with various rhythmic and melodic variations, all ending with double bar lines and repeat dots.



ES-DUR



E-DUR



F-DUR

The first section consists of four staves of music in F major (one flat) and 4/4 time. The first staff begins with a repeat sign and contains a sequence of eighth and sixteenth notes. The second and third staves continue with similar rhythmic patterns, including some slurs. The fourth staff concludes with a double bar line and a 4/4 time signature.

Übung 5 - Artikulationsübungen

C-DUR

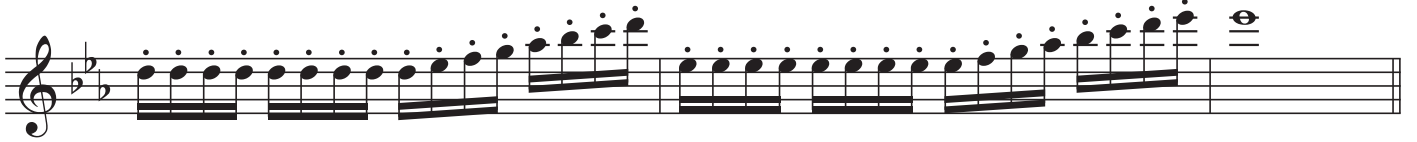
The second section consists of five staves of music in C major (no sharps or flats) and 4/4 time. The first staff starts with a repeat sign and features a series of eighth notes. The following four staves contain more complex articulation exercises, including sixteenth-note runs and slurs. The final staff ends with a double bar line and a fermata over the final note.

D-DUR

Musical score for Flute in D major (D-DUR), 4/4 time signature. The score consists of ten staves of music. The first staff begins with a treble clef, a key signature of two sharps (F# and C#), and a 4/4 time signature. The music is written in a rhythmic pattern of eighth and sixteenth notes, with some triplets. The second staff continues the melody. The third staff shows a change in the rhythmic pattern. The fourth staff features a more complex rhythmic structure with many beamed notes. The fifth staff continues with similar complex patterns. The sixth staff shows a change in the rhythmic pattern. The seventh staff continues with similar complex patterns. The eighth staff shows a change in the rhythmic pattern. The ninth staff continues with similar complex patterns. The tenth staff ends with a final note and a fermata.

ES-DUR

Musical score for Flute in E major (ES-DUR), 4/4 time signature. The score consists of four staves of music. The first staff begins with a treble clef, a key signature of one sharp (F#), and a 4/4 time signature. The music is written in a rhythmic pattern of eighth and sixteenth notes, with some triplets. The second staff continues the melody. The third staff shows a change in the rhythmic pattern. The fourth staff continues with similar complex patterns.



E-DUR



The image displays a musical score for a flute, consisting of ten staves. The first nine staves are in the key of B major (three sharps). The tenth staff is in the key of B minor (two flats) and is labeled "B-DUR" in a box. The music features complex rhythmic patterns with many beamed notes and accents. The notation includes various note values, rests, and dynamic markings such as mf and f . The score is written in a single system, with each staff representing a line of music.

Übung 6 - Intonationsübungen

(für Fortgeschrittene)

Kontrolliere die Intonation durch die Obertöne.

Da der überblasene Ton zu tief ist soll sich der "echte" Ton annähern.
Hierzu führst du den Luftstrahl nach oben. (siehe Übung A)

A

Höre gut hin und gleiche bei den jeweiligen Intervallsprüngen die Intonation aus.

Als Orientierung dienen hier die Zahlen:

+2 heisst z.B. "leicht höher intonieren" oder -8 bedeutet "sehr viel tiefer intonieren".

B