

Horn

Übung 1 - Töne aushalten

Spieler die Übung nur mit den Lippen,
dann nur mit dem Mundstück.



Nordbayerischer
Musikbund e.V.

Mittlere Lage



Hohe Lage

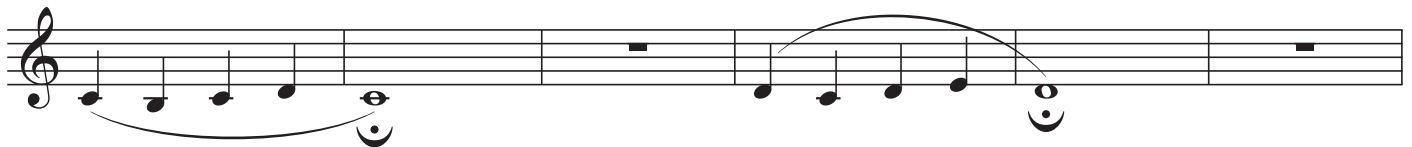


Tiefe Lage



Spieler die Übung mit dem Horn

Mittlere Lage



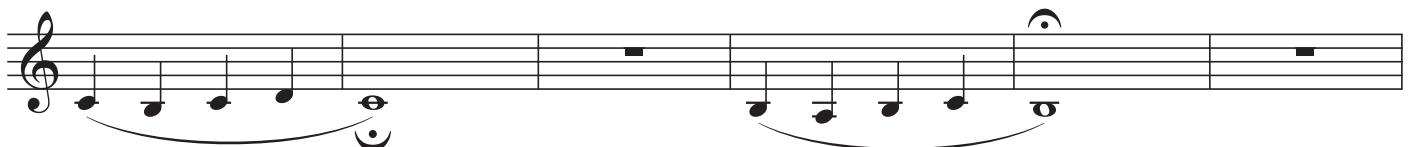
Auf Lippendruck achten!

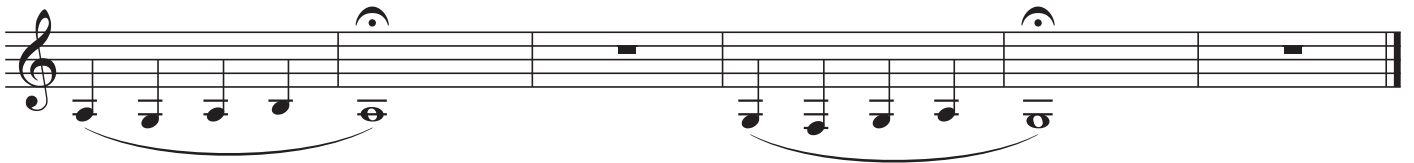


Auf Lippendruck achten!



Tiefe Lage

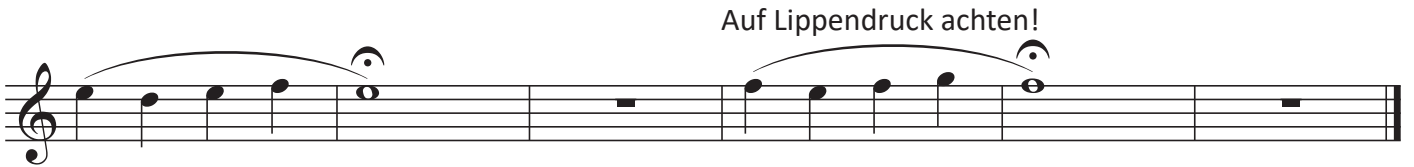




Hohe Lage



Auf Lippendruck achten!



Auf Lippendruck achten!

Übung 2 - Bindungen

Spielen Sie die Übung einmal langsam,
bei der Wiederholung im doppelten Tempo.



0



2



1



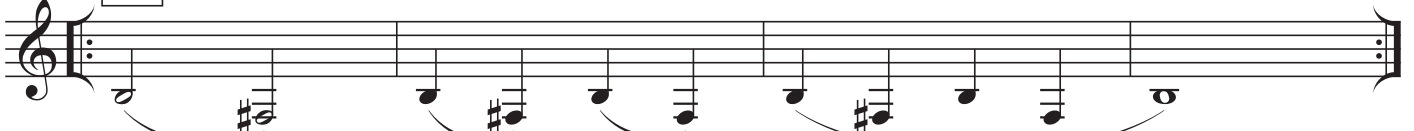
12



23



13



123

Übung 3 - Bindungen

Spieler die Übung einmal langsam,
bei der Wiederholung im doppelten Tempo.

13

23

12

1

2

0

Übung 4 - Flowübungen

nach Vincent Cichowicz

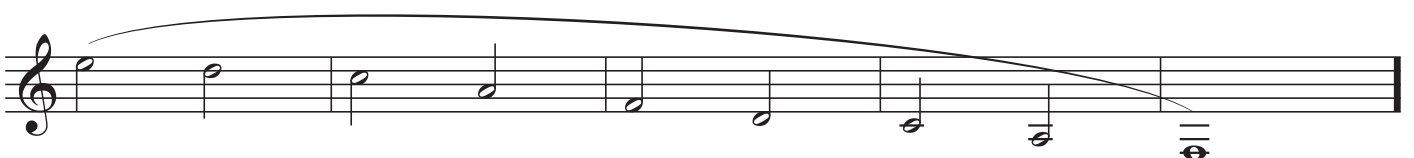
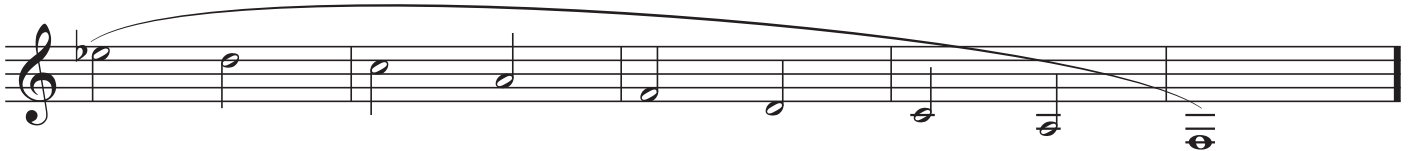
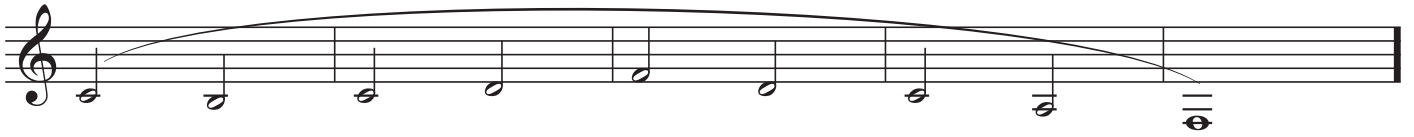
Bearbeitung für Horn von R. Boivin

Lasse die Luft entspannt und gleichmäßig fließen.

Spieler jeden Ton gleich laut.

Achte auf einen vollen und warmen Klang.

Horn - 4/12



The image shows six staves of musical notation for horn. Each staff contains a sequence of notes, primarily half notes and quarter notes, connected by a long, sweeping slur that spans the entire length of the staff. The notes generally move in a descending or slightly undulating pattern. The first staff starts with a treble clef and a key signature of one flat (B-flat). The second staff starts with a treble clef and a key signature of two flats (B-flat and E-flat). The third staff starts with a treble clef and a key signature of one flat (B-flat). The fourth staff starts with a treble clef and a key signature of two sharps (F# and C#). The fifth and sixth staves start with a treble clef and a key signature of one flat (B-flat). The notes are mostly half notes and quarter notes, with some eighth notes in the later parts of the staves.

Übung 5 - Stoßübungen

Achte auf einen konstanten Luftfluss.

Entspannung statt Anspannung.

C-DUR

Musical notation for C major in 4/4 time. The first staff shows a sequence of eighth-note patterns: four eighth notes on C4, followed by eighth notes on C4 and D4, then eighth notes on C4, D4, E4, and F4, and finally eighth notes on C4, D4, E4, and F4. The second staff continues with eighth notes on C4, D4, E4, and F4, followed by eighth notes on C4, D4, E4, and F4, and ends with a quarter note on C4.

Musical notation for C major in 4/4 time. The first staff shows a sequence of eighth-note patterns: eighth notes on C4, D4, E4, and F4, followed by eighth notes on C4, D4, E4, and F4, and finally eighth notes on C4, D4, E4, and F4. The second staff continues with eighth notes on C4, D4, E4, and F4, followed by eighth notes on C4, D4, E4, and F4, and ends with a quarter note on C4.

B-DUR

Musical notation for B major in 4/4 time. The first staff shows a sequence of eighth-note patterns: eighth notes on B3, C#4, D#4, and E4, followed by eighth notes on B3, C#4, D#4, and E4, and finally eighth notes on B3, C#4, D#4, and E4. The second staff continues with eighth notes on B3, C#4, D#4, and E4, followed by eighth notes on B3, C#4, D#4, and E4, and ends with a quarter note on B3.

Musical notation for B major in 4/4 time. The first staff shows a sequence of eighth-note patterns: eighth notes on B3, C#4, D#4, and E4, followed by eighth notes on B3, C#4, D#4, and E4, and finally eighth notes on B3, C#4, D#4, and E4. The second staff continues with eighth notes on B3, C#4, D#4, and E4, followed by eighth notes on B3, C#4, D#4, and E4, and ends with a quarter note on B3.

AS-DUR

Musical staff for AS-DUR, first system. The staff is in treble clef with a key signature of three flats (B-flat, E-flat, A-flat). It contains a sequence of eighth notes in a sixteenth-note pattern, starting on G4 and ascending to A4. The final note is a half note with a fermata.

Musical staff for AS-DUR, second system. It continues the eighth-note sequence from the first system, ending with a half note on G4.

G-DUR

Musical staff for G-DUR, first system. The staff is in treble clef with a key signature of one sharp (F#). It contains a sequence of eighth notes in a sixteenth-note pattern, starting on G4 and ascending to A4. The final note is a half note with a fermata.

Musical staff for G-DUR, second system. It continues the eighth-note sequence from the first system, ending with a half note on G4.

F-DUR

Musical staff for F-DUR, first system. The staff is in treble clef with a key signature of two flats (B-flat, E-flat). It contains a sequence of eighth notes in a sixteenth-note pattern, starting on F4 and ascending to G4. The final note is a half note with a fermata.

Musical staff for F-DUR, second system. It continues the eighth-note sequence from the first system, ending with a half note on F4.

D-DUR

Musical staff for D-DUR, first system. The staff is in treble clef with a key signature of two sharps (F#, C#). It contains a sequence of eighth notes in a sixteenth-note pattern, starting on D4 and ascending to E4. The final note is a half note with a fermata.

Musical staff for D-DUR, second system. It continues the eighth-note sequence from the first system, ending with a half note on D4.

ES-DUR

Musical staff for ES-DUR, first system. The staff is in treble clef with a key signature of three flats (B-flat, E-flat, A-flat). It contains a sequence of eighth notes in a sixteenth-note pattern, starting on E4 and ascending to F4. The final note is a half note with a fermata.

Musical staff for ES-DUR, second system. It continues the eighth-note sequence from the first system, ending with a half note on E4.

F-DUR

Horn - 7/12

Two staves of musical notation in F major. The first staff contains four measures of eighth-note patterns, with the final note of the fourth measure held as a whole note. The second staff contains two measures of eighth-note patterns, ending with a whole note.

CHROMATIK

Five staves of musical notation for chromatic exercises. Each staff contains eighth-note patterns with various chromatic alterations (sharps and naturals) across different registers.

Übung 6 - Stoßübungen

Achte auf einen konstanten Luftfluss.

Entspannung statt Anspannung.

Spiele, als ob es ein einziger langer Ton wäre.

♩ = 56 - 100

Three staves of musical notation for 'Stoßübungen' in 4/4 time. Each staff contains eighth-note patterns with various chromatic alterations, ending with a whole note.

Horn - 8/12

The image displays ten staves of musical notation for a Horn part. Each staff begins with a treble clef and a common time signature (C). The notation is dense, featuring a variety of rhythmic values including eighth, sixteenth, and thirty-second notes, often grouped in beams. There are frequent changes in key signature, indicated by sharp and flat accidentals throughout the piece. The music concludes on each staff with a final note followed by a fermata. The overall style is that of a technical or etude piece, focusing on rhythmic precision and melodic agility.

Übung 7 - Fingergymnastik



0/2



0/1



0/12



0/23



3/0



2/1



12/23



23/1



1/12

13/2

3/2

12/3

Übung 8 - Synchronisationsübung

Die Finger, die Luft und die Zunge gut synchronisieren und kontrollieren.

C-DUR

D-DUR

ES-DUR

F-DUR

G-DUR



Übung 9 - Sicher Töne treffen

Achte trotz der Pausen auf einen konstanten Luftfluß.

Jeder Ton sollte gleich laut sein.



Horn - 12/12

