

Übung 1 - Übungen zum Einblasen



Nordbayerischer
Musikbund e.V.

A ♩ = 60-68
Töne sanft, aber fokussiert anblasen

B

C

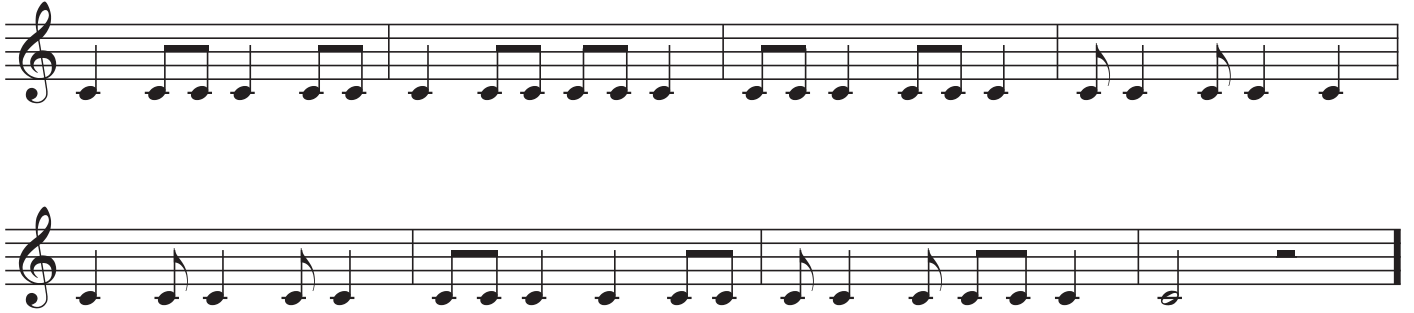
D

E

Übung 2 - Rhythmusstudien im Prinzipalregister

mit Viertel- und Achtelnoten

A



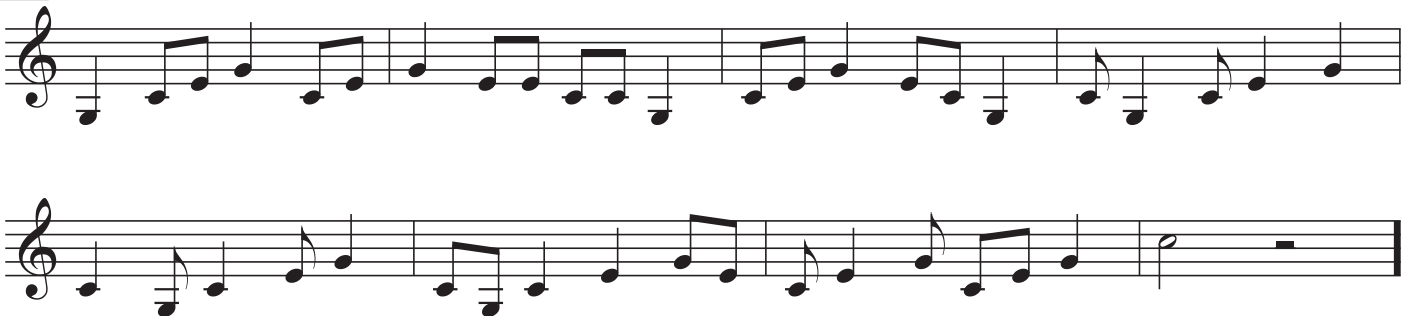
B



C



D



E



Übung 3 - Rhythmusstudien im Prinzipalregister

mit Achtel- und Sechzehntelnoten

A

Exercise A consists of two staves of rhythmic exercises. The first staff contains four measures of eighth-note patterns, with accents (>) on the eighth notes in the third and fourth measures. The second staff contains four measures of sixteenth-note patterns, with accents (>) on the first eighth note of each measure.

B

Exercise B consists of two staves of rhythmic exercises. The first staff contains four measures of eighth-note patterns, with accents (>) on the eighth notes in the third and fourth measures. The second staff contains four measures of sixteenth-note patterns, with accents (>) on the first eighth note of each measure.

C

Exercise C consists of two staves of rhythmic exercises. The first staff contains four measures of eighth-note patterns, with accents (>) on the eighth notes in the third and fourth measures. The second staff contains four measures of sixteenth-note patterns, with accents (>) on the first eighth note of each measure.

D


Exercise D consists of two staves of rhythmic exercises. The first staff contains four measures of eighth-note patterns, with accents (>) on the eighth notes in the third and fourth measures. The second staff contains four measures of sixteenth-note patterns, with accents (>) on the first eighth note of each measure.

E

Exercise E consists of two staves of rhythmic exercises. The first staff contains four measures of eighth-note patterns, with accents (>) on the eighth notes in the third and fourth measures. The second staff contains four measures of sixteenth-note patterns, with accents (>) on the first eighth note of each measure.

Übung 4 - Übungen im Prinzipalregister

A



Einatmen,
stützen!

Luft
ausatmen!

Exercise A: A single staff of music in 3/4 time, starting with a quarter rest followed by a dotted quarter note. The melody consists of eighth and quarter notes. It features a first ending bracketed with repeat signs, followed by a second ending. The piece concludes with a quarter rest and a fermata.

B



Exercise B: A single staff of music in 3/4 time, starting with a quarter rest followed by a dotted quarter note. The melody consists of eighth and quarter notes. It features a first ending bracketed with repeat signs, followed by a second ending. The piece concludes with a quarter rest and a fermata.

C



Exercise C: A single staff of music in 3/4 time, starting with a quarter rest followed by a dotted quarter note. The melody consists of eighth and quarter notes. It features a first ending bracketed with repeat signs, followed by a second ending. The piece concludes with a quarter rest and a fermata.

D



Exercise D: A single staff of music in 3/4 time, starting with a quarter rest followed by a dotted quarter note. The melody consists of eighth and quarter notes. It features a first ending bracketed with repeat signs, followed by a second ending. The piece concludes with a quarter rest and a fermata.

E



Exercise E: A single staff of music in 3/4 time, starting with a quarter rest followed by a dotted quarter note. The melody consists of eighth and quarter notes. It features a first ending bracketed with repeat signs, followed by a second ending. The piece concludes with a quarter rest and a fermata.

F




Exercise F: A single staff of music in 3/4 time, starting with a quarter rest followed by a dotted quarter note. The melody consists of eighth and quarter notes. It features a first ending bracketed with repeat signs, followed by a second ending. The piece concludes with a quarter rest and a fermata.

G



Exercise G: A single staff of music in 3/4 time, starting with a quarter rest followed by a dotted quarter note. The melody consists of eighth and quarter notes. It features a first ending bracketed with repeat signs, followed by a second ending. The piece concludes with a quarter rest and a fermata.

H



Exercise H: A single staff of music in 3/4 time, starting with a quarter rest followed by a dotted quarter note. The melody consists of eighth and quarter notes. It features a first ending bracketed with repeat signs, followed by a second ending. The piece concludes with a quarter rest and a fermata.

Übung 5 - Zehn Etüden im Tonraum g bis g1

von Adrien Lagard

1

1. FINE 2.

D.C. al Fine

Detailed description: This exercise is written in 2/4 time and consists of four staves. The first staff begins with a repeat sign. The second staff features a first ending bracket labeled '1. FINE' and a second ending bracket labeled '2.'. The third staff continues the melodic line. The fourth staff concludes with a double bar line and the instruction 'D.C. al Fine'.

2

1. FINE 2.

D.C. al Fine

Detailed description: This exercise is also in 2/4 time and consists of four staves. The first staff starts with a repeat sign. The second staff has a first ending bracket labeled '1. FINE' and a second ending bracket labeled '2.'. The third staff continues the melody. The fourth staff ends with a double bar line and the instruction 'D.C. al Fine'.

Fanfare in Es - 6/9

3



4



Fanfare in Es - 7/9

5



6



Fanfare in Es - 8/9

7

Musical staff 1 for measure 7, featuring a treble clef and a 3/4 time signature. The staff contains a sequence of notes: a quarter note G4, an eighth note A4, a quarter note B4, a quarter note C5, a dotted quarter note B4, a quarter note A4, a quarter note G4, a quarter note F4, a quarter note E4, a quarter note D4, a quarter note C4, and a quarter note B3.

Musical staff 2 for measure 7, featuring a treble clef and a 3/4 time signature. The staff contains a sequence of notes: a quarter note G4, an eighth note A4, a quarter note B4, a quarter note C5, a dotted quarter note B4, a quarter note A4, a quarter note G4, a quarter note F4, a quarter note E4, a quarter note D4, a quarter note C4, and a quarter note B3. The staff concludes with a double bar line and the word "FINE".

Musical staff 3 for measure 7, featuring a treble clef and a 3/4 time signature. The staff contains a sequence of notes: a quarter note G4, an eighth note A4, a quarter note B4, a quarter note C5, a dotted quarter note B4, a quarter note A4, a quarter note G4, a quarter note F4, a quarter note E4, a quarter note D4, a quarter note C4, and a quarter note B3.

Musical staff 4 for measure 7, featuring a treble clef and a 3/4 time signature. The staff contains a sequence of notes: a quarter note G4, an eighth note A4, a quarter note B4, a quarter note C5, a dotted quarter note B4, a quarter note A4, a quarter note G4, a quarter note F4, a quarter note E4, a quarter note D4, a quarter note C4, and a quarter note B3. The staff concludes with a double bar line and the text "D.C. al Fine".

8

Musical staff 1 for measure 8, featuring a treble clef and a 3/4 time signature. The staff contains a sequence of notes: a quarter note G4, an eighth note A4, a quarter note B4, a quarter note C5, a dotted quarter note B4, a quarter note A4, a quarter note G4, a quarter note F4, a quarter note E4, a quarter note D4, a quarter note C4, and a quarter note B3.

Musical staff 2 for measure 8, featuring a treble clef and a 3/4 time signature. The staff contains a sequence of notes: a quarter note G4, an eighth note A4, a quarter note B4, a quarter note C5, a dotted quarter note B4, a quarter note A4, a quarter note G4, a quarter note F4, a quarter note E4, a quarter note D4, a quarter note C4, and a quarter note B3. The staff concludes with a double bar line and the word "FINE".

Musical staff 3 for measure 8, featuring a treble clef and a 3/4 time signature. The staff contains a sequence of notes: a quarter note G4, an eighth note A4, a quarter note B4, a quarter note C5, a dotted quarter note B4, a quarter note A4, a quarter note G4, a quarter note F4, a quarter note E4, a quarter note D4, a quarter note C4, and a quarter note B3.

Musical staff 4 for measure 8, featuring a treble clef and a 3/4 time signature. The staff contains a sequence of notes: a quarter note G4, an eighth note A4, a quarter note B4, a quarter note C5, a dotted quarter note B4, a quarter note A4, a quarter note G4, a quarter note F4, a quarter note E4, a quarter note D4, a quarter note C4, and a quarter note B3. The staff concludes with a double bar line and the text "D.C. al Fine".

Fanfare in Es - 9/9

9



10

